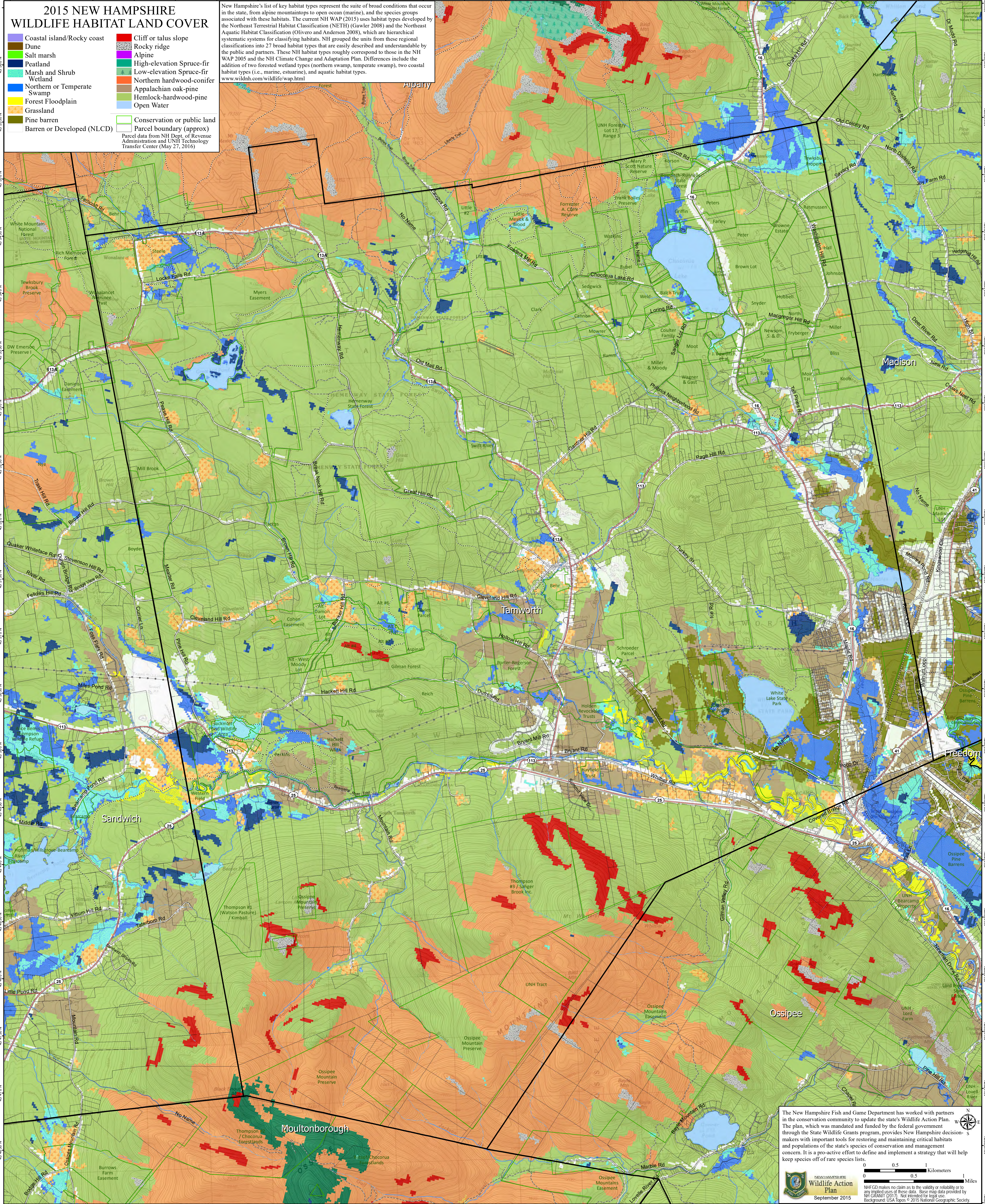


2015 NEW HAMPSHIRE WILDLIFE HABITAT LAND COVER

- Coastal island/Rocky coast
- Dune
- Salt marsh
- Peatland
- Marsh and Shrub Wetland
- Northern or Temperate Swamp
- Forest Floodplain
- Grassland
- Pine barren
- Barren or Developed (NLCD)
- Cliff or talus slope
- Rocky ridge
- Alpine
- High-elevation Spruce-fir
- Low-elevation Spruce-fir
- Northern hardwood-conifer
- Appalachian oak-pine
- Hemlock-hardwood-pine
- Open Water
- Conservation or public land
- Parcel boundary (approx)

New Hampshire's list of key habitat types represent the suite of broad conditions that occur in the state, from alpine mountaintops to open ocean (marine), and the species groups associated with these habitats. The current NH WAP (2015) uses habitat types developed by the Northeast Terrestrial Habitat Classification (NETHC) (Gawler 2008) and the Northeast Aquatic Habitat Classification (Olivero and Anderson 2009), which are hierarchical systematic systems for classifying habitats. NH grouped the units from these regional classifications into 27 broad habitat types that are easily described and understandable by the public and partners. These NH habitat types roughly correspond to those in the NH WAP 2005 and the NH Climate Change and Adaptation Plan. Differences include the addition of two forested wetland types (northern swamp, temperate swamp), two coastal habitat types (i.e., marine, estuarine), and aquatic habitat types.

www.wildnh.com/wildlife/wap.html



The New Hampshire Fish and Game Department has worked with partners in the conservation community to update the state's Wildlife Action Plan. The plan, which was mandated and funded by the federal government through the State Wildlife Grants program, provides New Hampshire decision-makers with important tools for restoring and maintaining critical habitats and populations of the state's species of conservation and management concern. It is a pro-active effort to define and implement a strategy that will help keep species off of rare species lists.

Wildlife Action Plan
September 2015

0 0.5 1 Kilometers
0 0.5 1 Miles

NHFGD makes no claim as to the validity or reliability of any implied uses of these data. Base map data provided by NH GRANIT (2017). Not intended for legal use. Background: USA Topos © 2015 National Geographic Society.