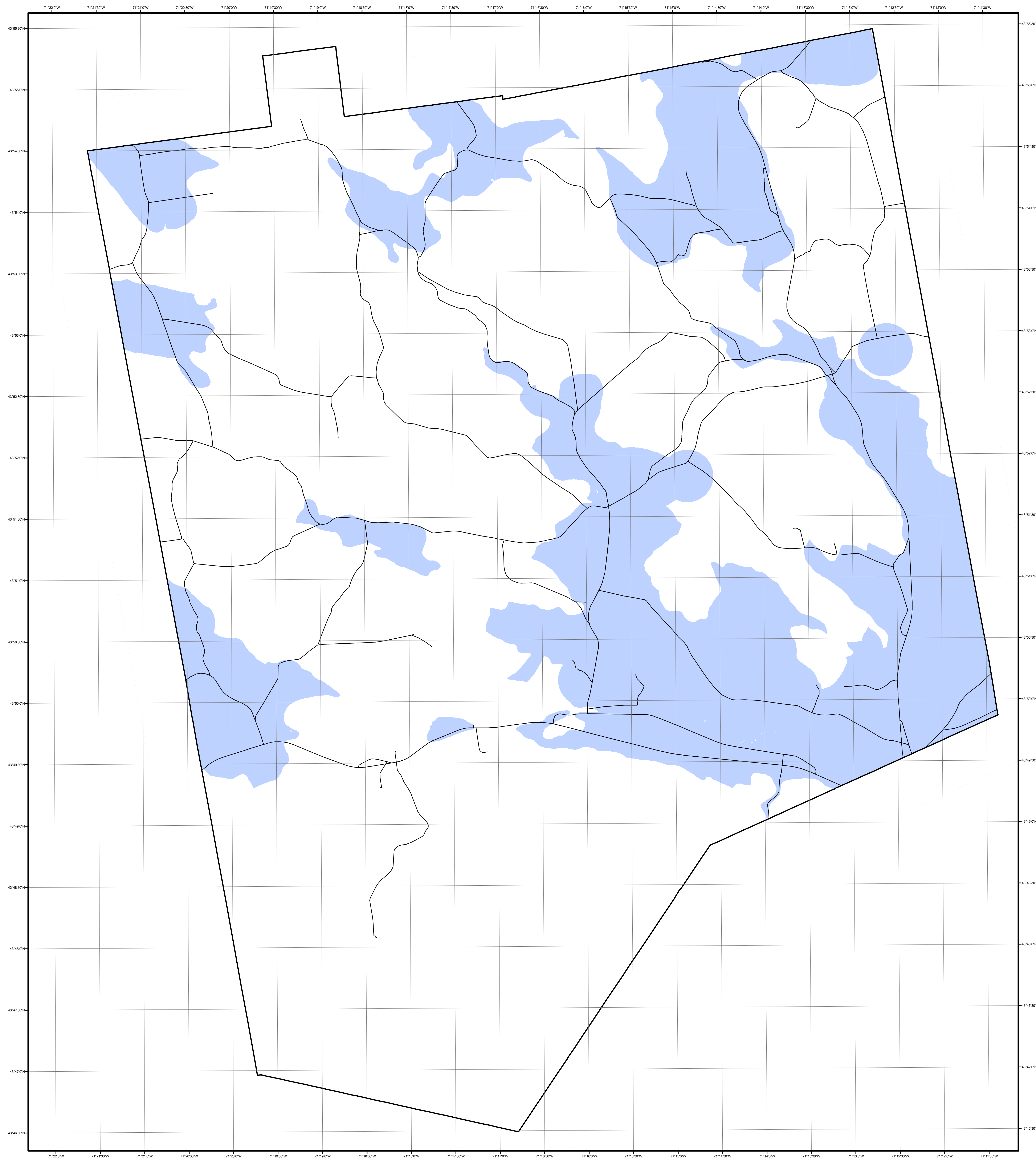


Town of Tamworth Groundwater Protection District dated 01/12/11



Town Border
 Roads
 Groundwater Protection District

Disclaimer: Most data presented on this map represents stock data sets obtained from NH GRANIT, at Complex Systems Research Center (CSRC), UNH. Digital data in NH GRANIT represent the efforts of the contributing agencies to record information from the cited source materials. CSRC, under contract to the NH Office of Energy and Planning (OEP), and in consultation with cooperating agencies, maintains a continuing program to identify and correct errors in these data. OEP, CSRC, and the cooperating agencies make no claim as to the validity or reliability or to any implied uses of these data.
 Projection: NH State Plane Feet, North American Datum 1983
 Scale: 1:24,000 with a standard accuracy of +/- 60 feet.
 Town Boundary: Town boundaries mapped on standard 7.5-minute USGS quadrangles. The data were generated from standard USGS 1:24,000/1:25,000-scale Digital Line Graphs, and thus meet National Map Accuracy standards.
 Complex Systems Research Center, University of New Hampshire
 Latest revision: April 2009
 Roads: Roads based on statewide dataset containing the location of state, local and selected private roads and their associated attributes.
 NH Department of Transportation, Bureau of Planning & Community Assistance
 Latest revision: April 2010
 Wellhead Protection Areas: All of the NH Department of Environmental Services approved Wellhead Protection Areas (WHPAs) for community Public Water System. WHPAs maps for community and non-community, non-transient drinking water supplies, are delineated using hydrologic areas of concern as a basis for determining surface areas that flow to a surface water body.
 Latest revision: January 2011.
 Aquifers: Areas overlying Stratified Drift Aquifers as described in Geology and Water Quality of Stratified Drift Aquifers in the Saco and Ossipee River Basins, East-Central New Hampshire, USGS Water Resources Investigations Report 95-4182. Aquifer map data was generated as part of groundwater resources study under a cooperative agreement between the US Geological Survey and NH Department of Environmental Services, Water Resources Division.
 Latest revision: February 2000.

